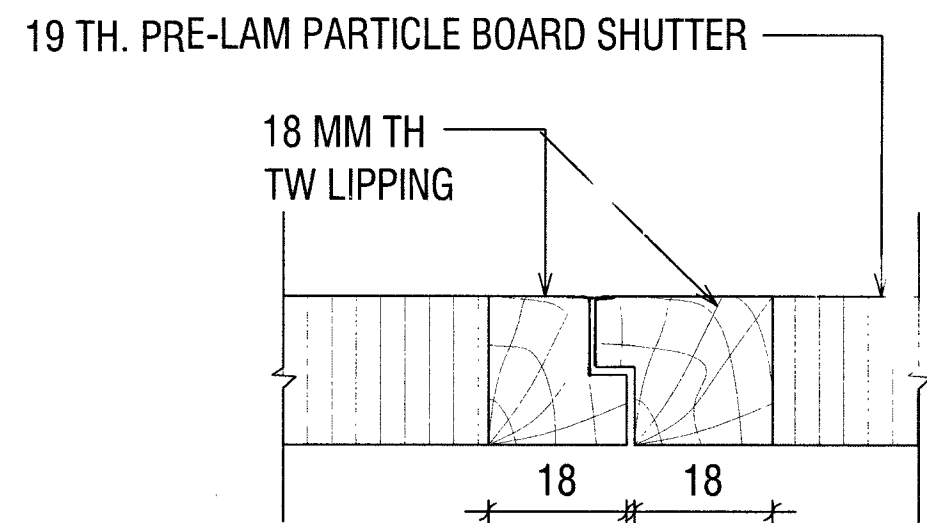
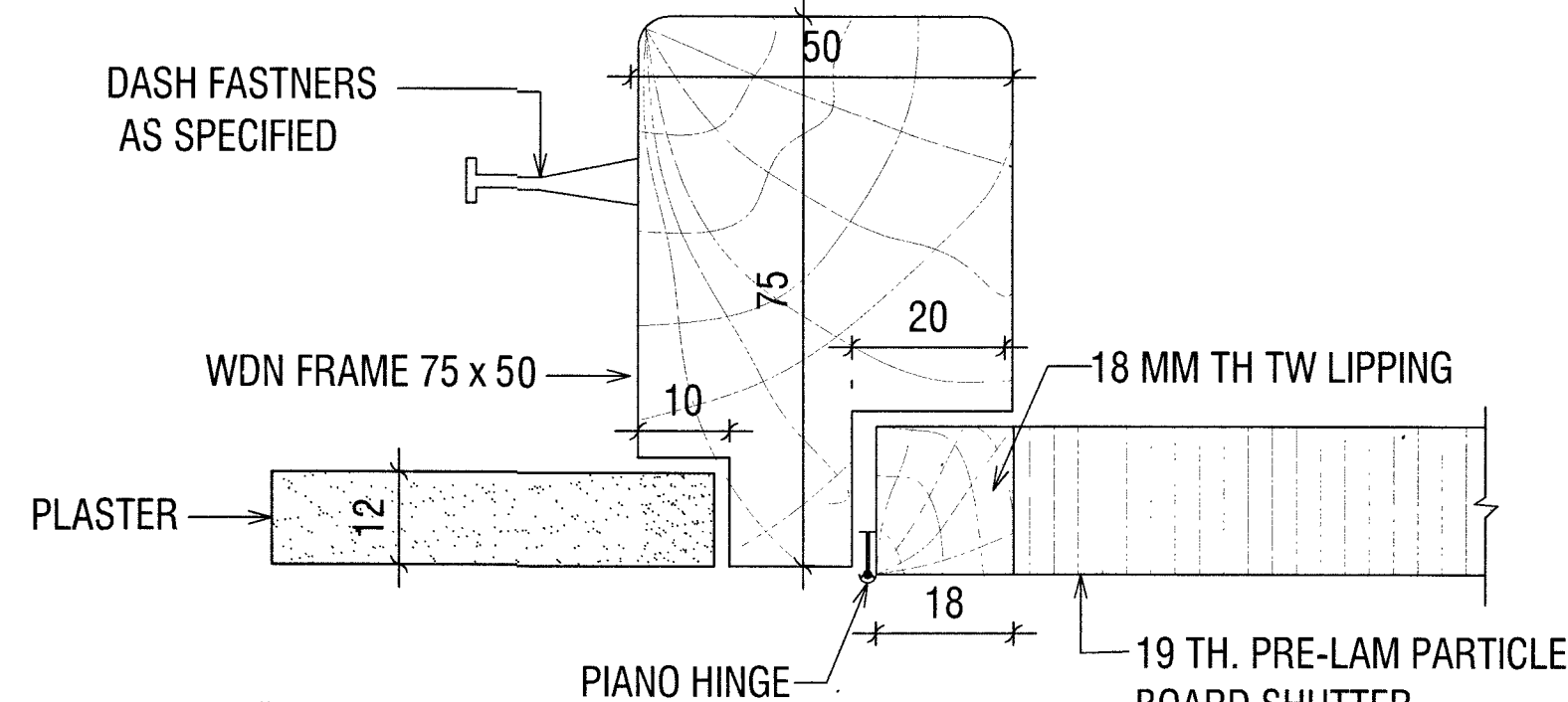


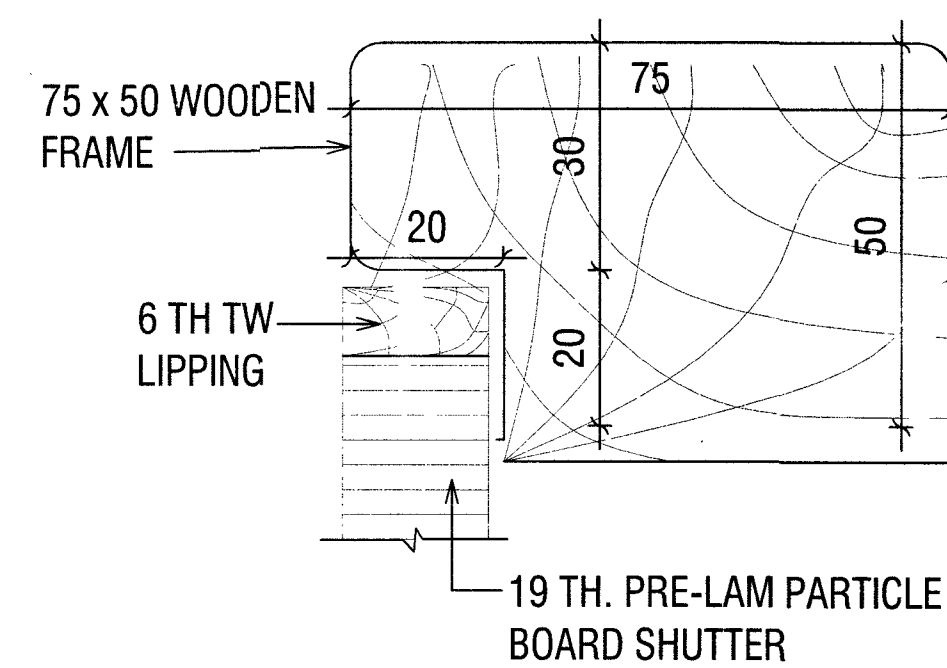
DETAIL AT 'X1'
SCALE 1:2



DETAIL AT 'Q1'
SCALE 1:2



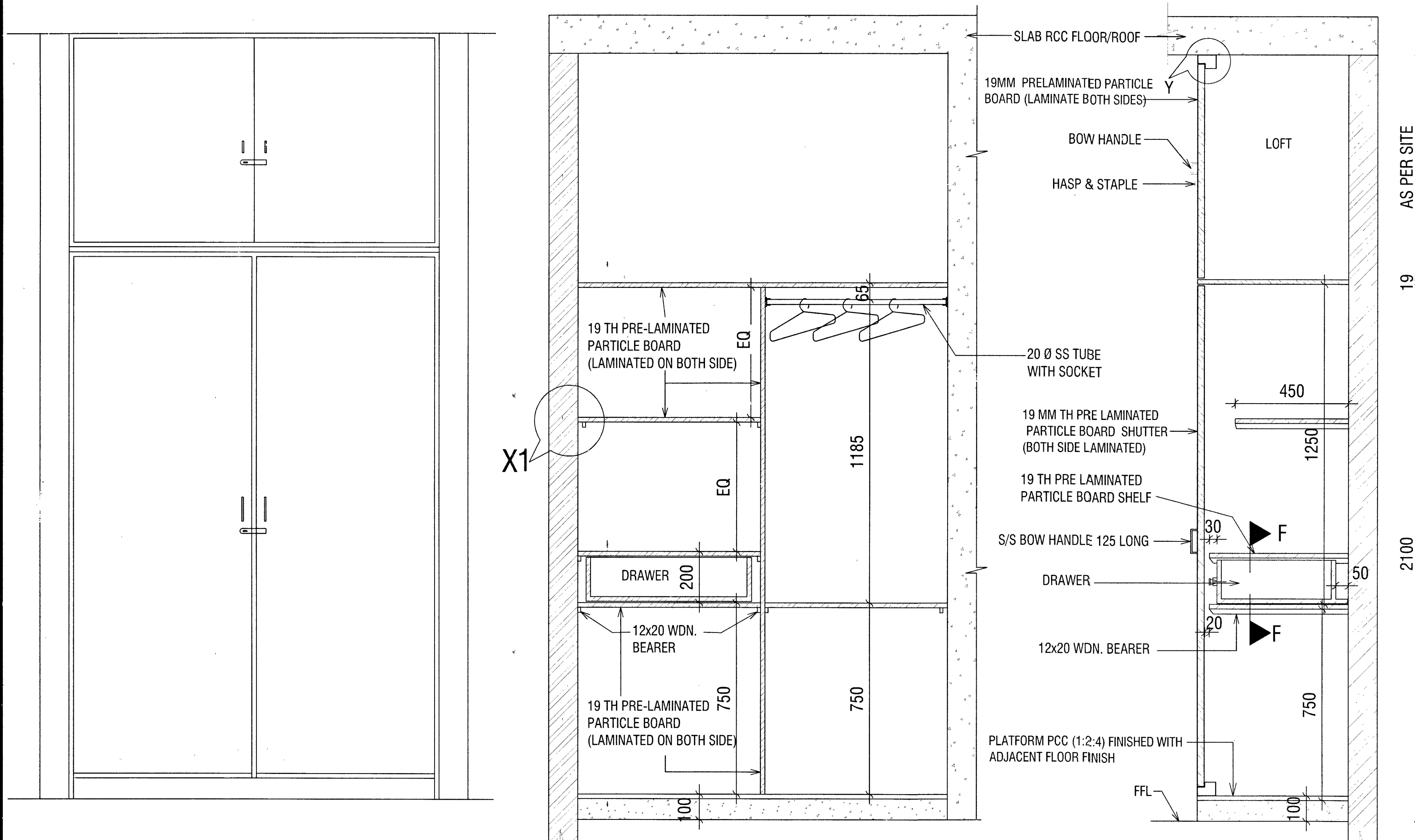
DETAIL AT 'P1'
SCALE 1:2



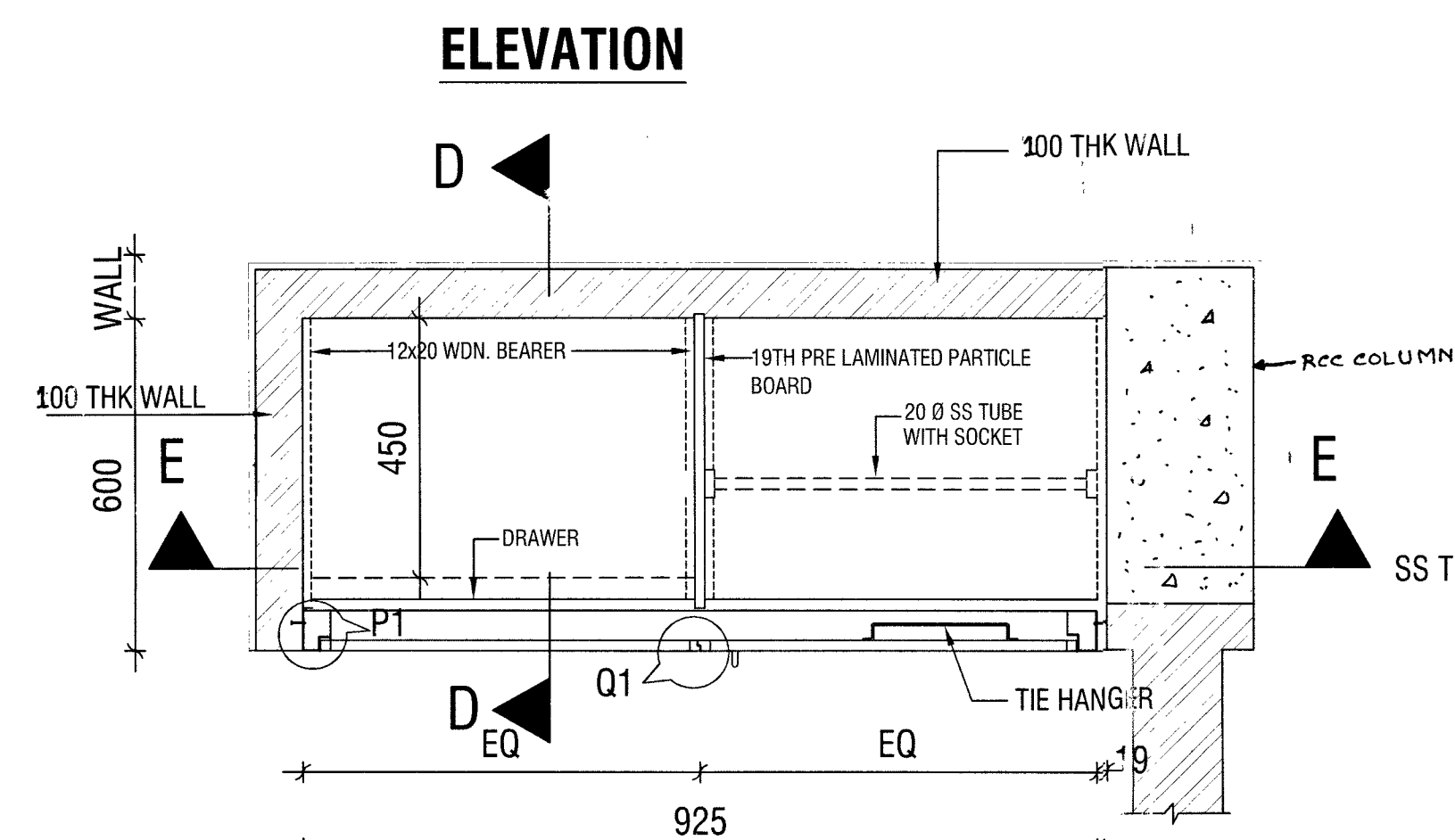
DETAIL AT 'Y'
SCALE 1:2

NOTES :-

1. CONTRACTOR TO CHECK & VERIFY ALL DIMENSIONS BEFORE EXECUTION OF WORK.
2. FIGURED DIMENSIONS SHALL BE FOLLOWED.
3. ALL DIMENSIONS ARE GIVEN IN MILLIMETERS UNLESS OTHERWISE SPECIFIED.
4. TIE HANGERS SHALL BE MADE OF 12Ø STAINLESS STEEL 300 LONG OR AS DIRECTED BY ENGINEER IN CHARGE DURING EXECUTION.
5. HANGER ROD SHALL BE OF 20 Ø 1.25 MM WALL THICK AND SHALL HAVE SUITABLE FIXING SOCKET.
6. ALL SHELVES, VERTICALS & DRAWER SHALL BE 19MM THICK PARTICLE BOARD PHENOL BONDED WITH COMMERCIAL FACE ON BOTH SIDES AND 6THICK LIPPING SHALL BE PROVIDED ON EXPOSED EDGES.
7. ALL SHUTTERS/DRAWERS FRONT AND COMPLETE INSIDE OF CB SHALL BE 19MM THICK PRE-LAMINATED PARTICLE BOARD & 6 MM THICK LIPPING SHALL BE PROVIDED ON TOP & BOTTOM AND 18 THICK TW LIPPING ON BOTH VERTICAL SIDES.
8. ALL TW LIPPING SHALL BE FIXED WITH ADHESIVE AND THEREAFTER NAILED WITH BOARD.
9. EXPOSED SURFACES OF TW LIPPING SHALL BE POLISHED.
10. S/S INDICATES STAINLESS STEEL.
11. ALL INSIDE WALLS OF CUPBOARDS SHALL BE FINISHED WITH 2 COATS OF ENAMEL PAINT OVER A COAT OF PRIMER.



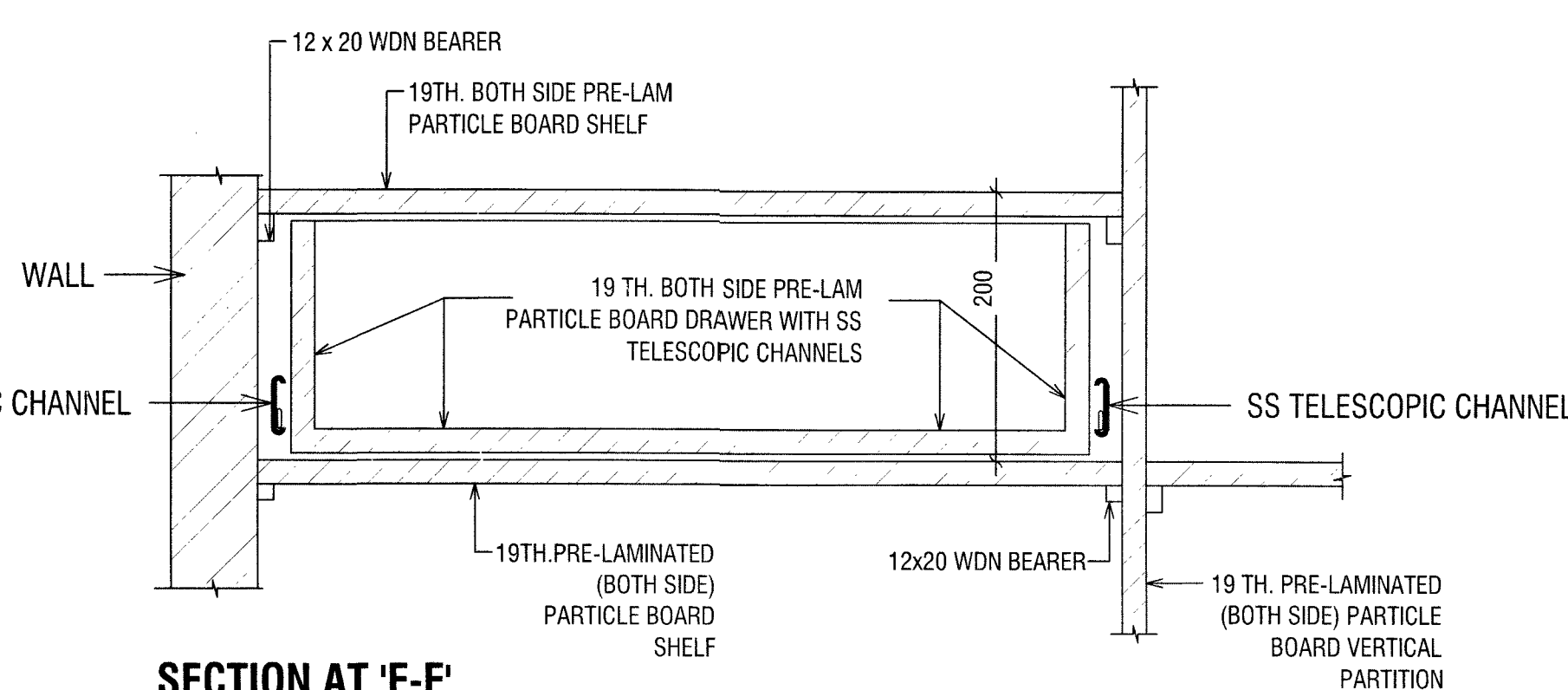
| SHDULE OF FITTINGS/FIXTURES | | |
|-----------------------------|--|-------------------|
| SL No | DESCRIPTION OF ITEMS | FOR CUPBOARD (CB) |
| 1 | 12 MM Ø DASH THROUGH BOLT 100 MM LONG | 6 |
| 2 | 3.15 MM THICK STAINLESS STEEL PIANO HINGE (1 NO PER SHUTTER) | 2 + 2 |
| 3 | 125 MM LONG S/S HANDLE WITH RIM LOCK | 2 |
| 4 | S/S BOW HANDLE (01 No EACH SHUTTER) 100 MM | 2 |
| 5 | S/S HASP & STAPLE 75 MM LONG | 2 |
| 6 | MAGNET CATCHER | 4 |
| 7 | S/S BOW HANDLE 100 MM FOR DRAWER | 1 |
| 8 | SS TELESCOPIC CHANNEL 450 LONG | 2 |



PLAN OF CB
SCALE 1:25

SECTION AT 'E-E'
SCALE 1:25

SECTION AT 'D-D'
SCALE 1:25



SECTION AT 'F-F'
SCALE 1:10

| S No | DATE | DESCRIPTION | INITIAL |
|------|------|-------------|---------|
|------|------|-------------|---------|

REVISIONS

PROVISION OF DEFICIENT 287 SINGLE INLIVING ACCN ASSOCIATED FACILITIES FOR DSC AT NAVAL DOCKYARD, VISAKHAPATNAM (BD NO AMWP 46/2020)

DETAILS OF CUPBOARD (CB)

| | | | |
|-------|-------------|---|----------|
| Date | 20-06-2022 | CHIEF ENGINEER (NAVY) VISAKHAPATNAM ZONE | Sheet No |
| Drawn | SUB ASHOKAN | | 1/1 |
| Ckd | K SATYAVANI | | |
| Scale | As shown | DRG NO: CEVZ / 2022 / WD-2110-CB | |

AAD (Arch)

JT DIR (ARCH)

Director (Arch)
For Chief Engineer